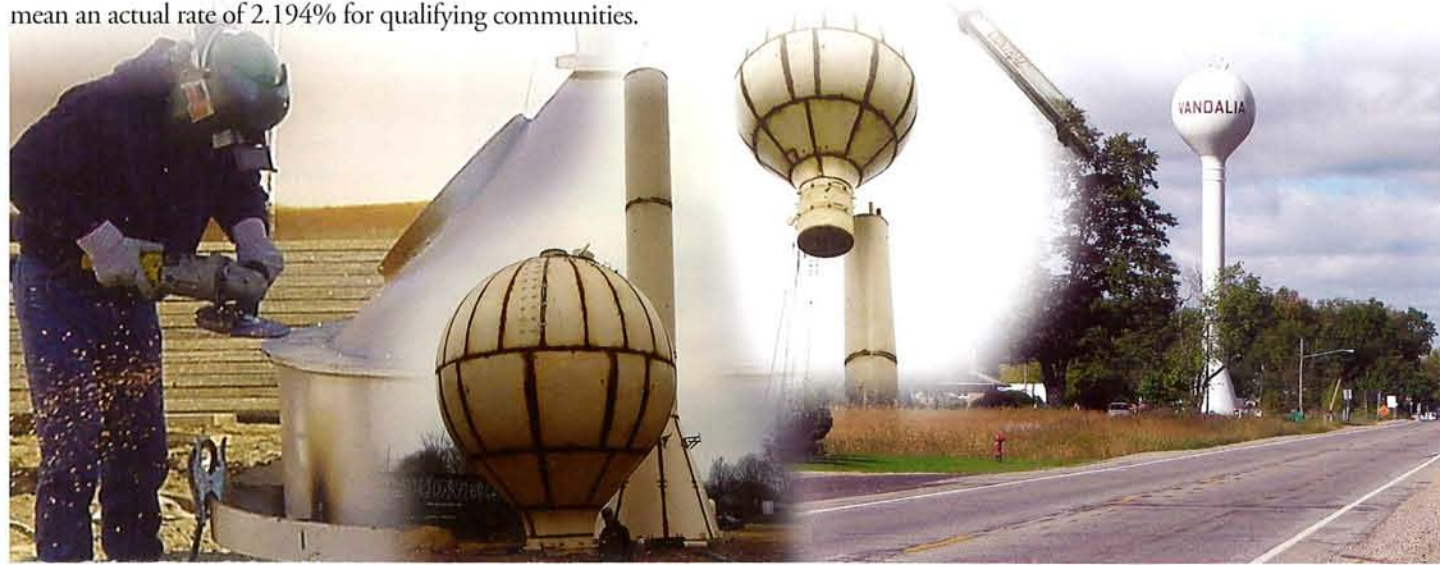


Chop 35% off of your interest payment.

Much needed sewer and water projects are now much more affordable thanks to part of the Stimulus Program called Build America Bonds. Municipalities with sewer and water projects that meet USDA Rural Development requirements can sell taxable Build America Bonds for low interest funding. Thirty-five percent of the bond interest rate is rebated each year for up to forty years. At the current intermediate interest rate of 3.375%, a 35% reduction would mean an actual rate of 2.194% for qualifying communities.

WAI is currently working with Penn Township, Cass County, MI to fund their water project that will provide water service to 930 customers. The rebated interest from the Build America Program will save each user \$1,900 over the 40 year period or an average of \$47.50 per year. Contact us to find out more about this program. Bonds must be sold by 12/31/2010 to qualify. ■



WAI THE WIGHTMAN WAY

Winter 2009

Practical Solutions Based On Common Sense.



Water & Wastewater Design

Commercial Design

Wetland Mitigation

We all want a deal...especially in this economy

Every organization is looking for ways to spend their money wisely and more frugally in order to keep services available and at the level customers have come to expect. WAI has not been immune from this process. We have had to make adjustments in order to compete in this new economic environment. So we understand the frustration.

We evaluated many of the services that we purchase and found that comparing proposals from different companies to be a nightmare. There were different terms used for the same service, duplication of services, unnecessary services all adding up to a confusing, time consuming mess. Not to mention prices that were all over the board and in some cases higher than the going market.

Looking at the lowest price proposal found us wondering what details may not be included. Some higher priced proposals had extra or hidden benefits that were not explained or they assumed that we just knew they were included. We learned not to look at the bottom line and to ask a lot of questions.

One consistent pitfall during this process was being charmed by the salesperson. It was so common to hear the buzz words "trust", "quality", and "relationship" but seldom the specifics of "what", "how", and "why". When the salesperson left we would

ask ourselves "Was I served soufflé or meat and potatoes"?

This journey has lead us to look at how we present proposals. We know that we are not always the lowest priced firm and that we use a lot of the same buzz words that our competitors do. However, the best value we offer is *spending your money as if it were our own*. And we are frugal.

You have limited resources and we want to help you use them wisely. Our projects are approached in the most practical manner without including a lot of bells and whistles that add to the cost but do little to enhance the performance or lifecycle.

You will know what every line item is and not be charged for the same item twice. We include charges such as mileage, lodging, phones, equipment, etc. in our hourly rate, as part of our quoted fees.

If you find yourself wondering if you are getting a good deal, WAI would like to help you. We can help you walk through bids that you have received or give you a comparison bid. No matter how you look at it, we are offering a reality check that we think you will find useful. ■



PRESORTED STANDARD
U.S. POSTAGE PAID
KALAMAZOO, MI
PERMIT NO. 36

WIGHTMAN & ASSOCIATES, INC.
ENGINEERING • SURVEYING • ARCHITECTURE

2303 Pipestone Road, Benton Harbor, MI 49022

A Natural Way to Fight Pollution

A rain garden can be a powerful pollution fighter and a creative landscape focal point that requires little maintenance. This natural concept takes storm water runoff from driveways, rooftops, sidewalks and roadways and filters silt and sediment out of the water before it saturates the ground and ultimately replenishes the groundwater. Traditionally, this unnatural runoff enters into storm water collection systems and discharges to a native area. This unfiltered runoff is considered one of the main sources of water pollution in our lakes, ponds and rivers.

A typical rain garden is a shallow depression which is planted with specific plants that are tolerant of the local climate, soil and water conditions and provide a natural environment for wildlife and insects. These plants are selected based on their absorptive capacity, deep root systems, color and height.



Harbor Shores in Benton Harbor, MI is creating the Hideaway, a 59 lot residential development adjacent to the Paw Paw River. The project is designed to incorporate eco-friendly concepts from the roadway to the cottage style homes. The site will have narrow bituminous roads with rain gardens along the edges to capture and clean up the storm water runoff. The rain gardens will serve as part of the storm water detention system. The overflow system on these gardens is designed to hold the water temporarily and to release

the water over a longer period of time. The storm water will slowly release to the adjacent river after the main storm surge has passed reducing the potential for flooding in the adjacent areas.

There are two county drains which will be modified as part of this project. Both of these drains will incorporate native stones and plantings to assist in the cleansing of the storm water as well as create the sound of cascading water. The site will be served with both sanitary sewer and water main.

Even Eagle Scouts see the advantage of Rain Gardens

Gordon Davis, son of WAI engineer Matt Davis, recently completed a rain garden project at Upton Middle School in St. Joseph, MI. An outdoor eating area was an uninviting place to gather. There was little grass and the site frequently flooded. Gordon with the help of many local businesses tore out the existing landscaping and benches. They constructed the rain garden and installed an overflow drain. Then planted native plants and a tree and reassembled the benches. Now there is an attractive place for students to gather for lunch and other activities. ■



Preserving The Beauty And Integrity Of Our Inland Lakes

Many inland lakes are facing health and public safety concerns over failing septic systems from the crowding of larger homes on small lots and greater need for water. Old septic systems can't keep up with the increase waste water from dishwashers and washers. In some areas new building permits are put on hold and existing homes are using a pump and haul temporary septic service until lake associations and local governments can work on an acceptable solution. Homeowners not wanting to give up their modern conveniences are seeing the need to install municipal sewer systems in order to protect the environment and their investments.

Such is the story for the Finch, Fish, Gravel and West Saddlebag Lake areas in Marcellus and Volinia Townships in Cass County and Porter Township in Van Buren County. The three townships formed the Lakes Area Sewer Authority to work with the Cass

County Board of Public Works to construct a USDA funded, \$10.833 million wastewater collection and treatment system to provide sanitary sewers, of which \$1.433 million was grant dollars.

Taking the most proactive and long-term management approach, the Authority and governmental parties determine that their best option was to build their own treatment plant.

Nearby, the Village of Marcellus was having capacity issues with its lagoons. The Authority negotiated a sewer treatment agreement with the Village to provide treatment for the Village on an as-needed basis when their lagoons exceeded capacity. In return the Village will permit the new treatment plant to be built adjacent to the Village lagoons. The result is a win-win situation for both entities and a great model of inter-governmental cooperation. WAI helped to facilitate communication and negotiations for all the parties.

The collection system is a gravity system with 14 lift stations while the treatment plant is a 250,000 gpd activated sludge process extended aeration facility expandable to 1.0 mgd. The selected treatment technology is also capable of providing biological nutrient removal. The basin design will permit the receipt of septage, requiring installation of only one septage receiving station and associated headworks/piping/etc.

When completed in August, 2010, the collection and treatment system will serve 700 residents plus the standby capacity for the Village of Marcellus. It will also be a success story of municipal cooperation that involved three townships, two counties, one village and a federal agency. ■



Great Things Are Happening...People.



Seth Morrison, A.I.A. returns as Staff Architect and is providing a range of architectural and drafting services on commercial, residential and public projects. Morrison has a Bachelor of Architecture from Andrews University, Berrien Springs, Michigan. He is licensed in Michigan, Indiana and Wisconsin. Before his return to WAI, Seth worked for Brownhouse Designs in Madison, WI.



Daniel E. Yerks, E. I.T. joined WAI as a Project Engineer. He has expertise and experience in managing a diverse range of projects for private and municipal clients. Yerks is originally from Sylvania, OH and graduated Magna Cum Laude with a Civil Engineering degree from Valparaiso University, Valparaiso, Indiana.



Bret Hart is now the Lead Engineering CAD Designer for the WAI engineering staff. Hart is using his CAD design expertise for projects that include site design, utilities design, engineering calculations (storm and sanitary), floodplain analysis, grading, and cut/fill analysis. Hart attended Macomb Community College in Clinton Township, MI.



WAI helped to sponsor the Berrien and Cass County Youth Fairs. Matthew and Allison Mitchell, son and daughter of David Mitchell, WAI Inspector, received Reserve Grand Championship awards for their entries.



The Michigan Chapter of the American Society of Landscape Architects recently presented Conservation Design Forum and WAI with an Honor Award for the Pokagon Edawat Residential Community in Dowagiac, Michigan. The community was recognized for following the Band's Tribal Mission to provide a high quality of life to its members while preserving Mother Earth. The neighborhood is an integrated system of restored native Michigan woodlands, prairies, and wetlands that allow access to the natural areas with walking paths. ■

Great Things Are Happening...Projects.

CROP Production Services

Providing topographic survey and site engineering design for a new project in Bainbridge Township.

Baroda Church of God

Providing topographic survey and site engineering design for a new church.

Berrien County Drain Commission

Assisting Commissioner with acquisition of easements.

Forest Beach Homeowners Assn.

Providing engineering services for upgrades to existing roads in development.

Meeks Construction

Preparing a joint permit application for creation of 15 acre pond.

Harbor Shores

Providing engineering and survey services for the installation of a series of rain gardens adjacent to a proposed roadway.

City of Dowagiac

Assisting with the creation and acquisition of easements.

Starr Valley Ranch

Helping to proactively maintain their roadways by providing bidding documents and assistance for chip sealing.

LML

Condominium documents for Fountain Square Development in New Buffalo.

Berrien County Road Commission

Completed design for Maudlin and Hoder road reconstruction and providing construction engineering and staking during construction.

Cass County

Completed design and secured funding for the non motorized path project.

Pokagon Band of Potawatomi Indians

Provided bidding documents and assistance for Potawatomi Indians widening and paving Elder Hall parking lot.

Assisting with applications for HUD& BIA funding Potawatomi Indians to construct a new community center.

Design of the new Drummer's Arbor for the existing Potawatomi Indians arena.

Provided mold remediation service for two houses.

Trinity Lutheran Church

Provided surveying and civil engineering for a proposed addition and will be providing the structural engineering services.

MDOT

Provided design survey for Napier and M-139 Intersection and Napier and I-94 Intersection.

MDOT/Hoffman Brothers

Construction staking for I-94 Business Loop reconstruction in Benton Harbor.

City of Watervliet

Completed energy audit and working and grant application for Stimulus Funds to help finance the recommendations.

Providing design & construction engineering for stimulus funded roadway projects.

Bidding and Construction of Safe Routes to Schools Project.

Completing an I&I analysis & updating sanitary and storm sewer maps.

Road To Life Church

Designing addition to the sanctuary.

Village of Mattawan

Completing a Capital Improvement Plan.

Huron Band of Potawatomi Indians

Assisting with applications for HUD funding to construct a 5 home residential development.

Silver Creek Township

Providing MDEQ permits, planning and specs to upgrade pumps and control systems for 7 lift stations for Indian Lakes Sewer system.

AEP D.C. Cook Nuclear Plant

Providing drainage & grading plan for Unit #1. RWST

Portage, Base & Whitewood

Operation Evaluation of the Portage (John Flook) Owners Association (PBWOA) Dam

Fenn Valley Vineyards

Evaluate process water disposal systems and prepare preliminary design.

SMR&S Authority

Completed study, plans and specifications developing user charge system for 3 townships in Authority, and bids for interceptor repair.

Developing base map & specs for bidding of valve turning services.

Cass County BPW

Bidding and constructing a \$10.833 million wastewater collection and treatment system.

Village of Eau Claire

Providing design & construction engineering for stimulus funded roadway projects.

Completed a USDA-RD for water system improvements, lift stations and lagoon improvements. Now completing the design and bidding documents.

Horizon Bank

Obtained a zoning change and provided site and preliminary building design for a branch bank in St. Joseph County, IN. Services required to obtain three variances and completion of an annexation application to the City of South Bend will also be provided.

wai The Wightman Way
is the official newsletter of
Wightman & Associates, Inc.

2303 Pipestone Road
Benton Harbor, MI 49022

Ph: (269) 927-0100
Fax: (269) 927-1300

www.wightman-assoc.com

Copyright © 2007-2009
Wightman & Associates, Inc.