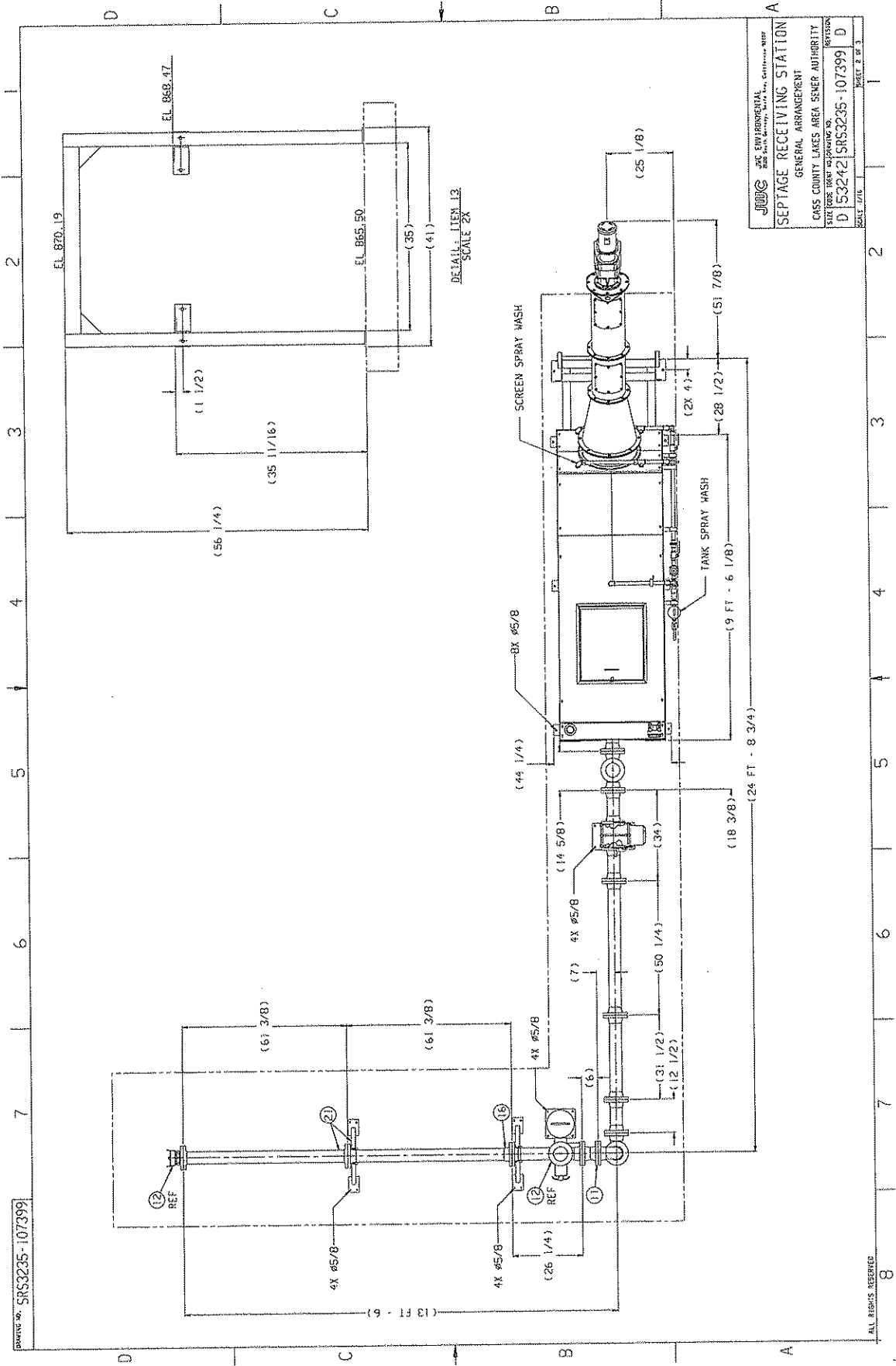


DRAWING NO. SRS3235-107399

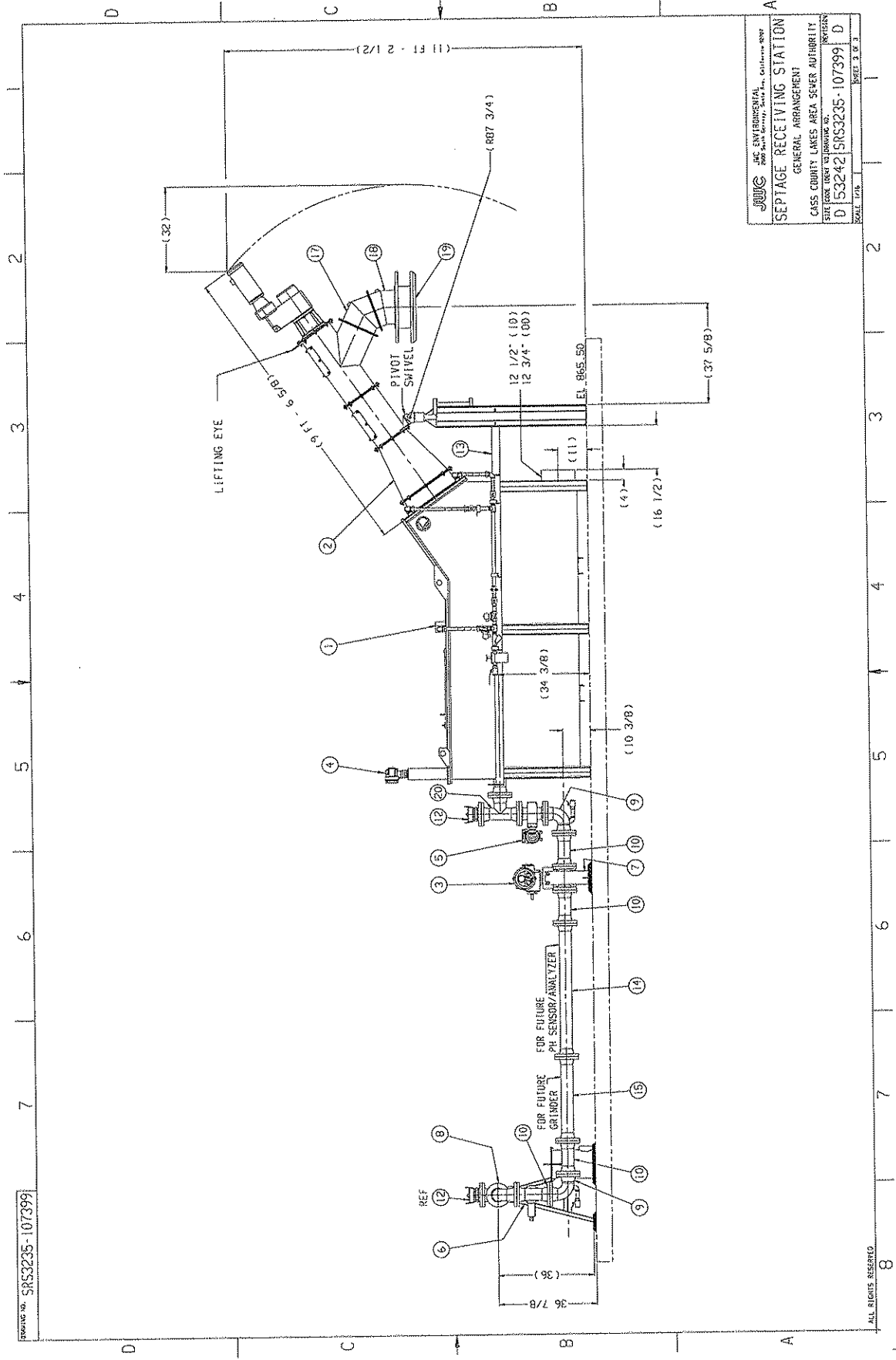



**JUNCO** ENVIRONMENTAL  
 205 N. 10th Street, Suite 100, Cassville, MO 64631  
 PHONE: 660-845-2200 FAX: 660-845-2201  
 WWW.JUNCO.COM

**SEPTAGE RECEIVING STATION**  
 GENERAL ARRANGEMENT  
 CASS COUNTY LAKES AREA SEWER AUTHORITY  
 5000 STATE STREET, CASSVILLE, MO 64631  
 D 53242 | SRS3235-107399 | D  
 SHEET 2 OF 3

ALL RIGHTS RESERVED

DRAWING NO. SRS3235-107399




**JWC ENVIRONMENTAL SERVICES, INC.**  
 200 South Street, Suite 200  
 Cass County, Missouri 64601  
 PHONE: (417) 842-1234  
 FAX: (417) 842-1235  
 WWW: www.jwcenv.com

**SEPTAGE RECEIVING STATION**  
 GENERAL ARRANGEMENT  
 CASS COUNTY LAKES AREA SEWER AUTHORITY  
 SITE FOR USE TO DRAWING NO. 107399  
 PROJECT NO. D 53242 | SRS3235-107399 | D  
 SCALE: 1/8" = 1'-0"

ALL RIGHTS RESERVED

DRAWING NO. SRS3235-107399

REV.	DATE	BY	DESCRIPTION
1	06-28-10	JK	ISSUED FOR CONSTRUCTION
2	07-18-10	JK	REVISED AND REDESIGNED
3	07-27-10	JK	REVISED AND REDESIGNED
4	07-27-10	JK	REVISED AND REDESIGNED
5	07-27-10	JK	REVISED AND REDESIGNED

NOTES UNLESS OTHERWISE SPECIFIED

1. INTERPRET DIMENSIONS IN ACCORDANCE WITH ASME Y14.5M-1994 STANDARDS.
2. 1/2" X 3-3/4" (QTY 24) MIN ANCHOR BOLTS REQUIRED (BY OTHERS) FOR ANCHORING ROCK TRAP. PLUG VALVE STAND AND TANK.
3. GROUT PADS (BY OTHERS) REQUIRED UNDER ROCK TRAP AND PLUG VALVE STAND.
4. A DOUBLE BACK-FLOW PREVENTOR IS RECOMMENDED (BY OTHERS) WHEN USING POTABLE WATER FOR SPRAY/FLUSH CONNECTION TO PREVENT SIPHONING INTO WATER SUPPLY.
5. REQUIRED WATER SUPPLY 10-15 GPM AT 20-30 PSI FOR EACH SPRAY WASH CONNECTION.
6. FIELD MEASUREMENTS MUST BE TAKEN PRIOR TO INSTALLATION TO VERIFY ADEQUATE CLEARANCE AROUND THE EQUIPMENT EXISTS.

7. GEARBOX LUBRICANT REQUIREMENTS:  
AUGER: POSITION ST; 000 WT. GREASE: 8.2 OZS.
8. ESTIMATED SHIPPING WEIGHTS:  
AUGER: 2100 LBS.  
TANK: 2050 LBS.

QTY	DESCRIPTION	UNIT	REMARKS
21	SRA0100-107399-04	PIPE SPOOL ASSEMBLY 61 3/8"	304 SST
20	SRA0100-0403-001-SS	PIPE TEE ASSEMBLY 4"	304 SST
19	AW06520-0001	BAGGER ASSEMBLY	304 SS/PPIC
18	AW06504-0200	20" ADAPTER ASSEMBLY	304 SST
17	AW06509-0200	45" ADAPTER ASSEMBLY	304 SST
16	SRA0100-107399-03	PIPE SPOOL ASSEMBLY 61 3/8"	304 SST
15	SRA0100-107399-02	PIPE SPOOL ASSEMBLY 31 1/2"	304 SST
14	SRA0100-107399-01	PIPE SPOOL ASSEMBLY 50 1/4"	304 SST
13	SRA1030-0480-SS	PIVOT SUPPORT BRACE ASSEMBLY	304 SST
12	SRA0100-0101-0400-AL	4" CANY-GROOVE ADAPTER	AL
11	SRA0100-0402-003-SS	PIPE SPOOL ASSEMBLY 6"	304 SST
10	SRA0100-0402-001-SS	PIPE SPOOL ASSEMBLY 12 1/2"	304 SST
9	SRA0100-0401-002-SS	4" ELBOW ASSEMBLY 90° W/1" NPT DRAIN PORT	304 SST
8	SRA0100-0401-001-SS	4" ELBOW ASSEMBLY 90°	304 SST
7	SRA1101-0100-MIL-SS	PLUG VALVE STAND	304 SST
6	SRA0102-0804-001-10-SS	ROCK TRAP ASSEMBLY	304 SST
5	SRA0061-0100-201	FLOW METER ASSEMBLY	STL
4	E15-022-001	ULTRASONIC TRANSDUCER ASSEMBLY	ALUMINUM
3	SRA0060-0100-010	PLUG VALVE ASSEMBLY	STL/304 SST
2	AG03235-500-DW	INCLINED AUGER - 500MM	304 SST/ALLOY STL
1	SRA3235-SS	SEPTAGE RECEIVING TANK ASSEMBLY	304 SST

DATE: 07/27/10  
 DRAWN BY: JK  
 CHECKED BY: JK  
 APPROVED BY: JK  
 PROJECT NO.: SRS3235-107399  
 SHEET NO.: 2 OF 3  
 SCALE: 1/8" = 1'-0"

GENERAL ARRANGEMENT  
 SEPTAGE RECEIVING STATION  
 CASS COUNTY LAKES AREA SEWER AUTHORITY  
 1000 N. W. 10TH ST.  
 D 53242 SRS3235-107399 D

THIS DRAWING AND DATA ARE FULLY PROTECTED BY PATENT RIGHTS AND SHOULD BE KEPT IN CONFIDENTIAL ORDER TO THE COMPANY. ANY REPRODUCTION OR DISSEMINATION OF THIS DRAWING WITHOUT THE EXPRESS WRITTEN PERMISSION OF THE COMPANY IS STRICTLY PROHIBITED. THE COMPANY ASSUMES NO LIABILITY FOR DAMAGE TO PERSONS OR PROPERTY CAUSED BY THE USE OF THIS DRAWING, WHETHER IN WHOLE OR IN PART, OR FOR ANY CONSEQUENCES THEREOF.

ALL DIMENSIONS IN INCHES UNLESS OTHERWISE NOTED